
Uninsured, Medicaid and the Current Population Survey

Cathi M. Callahan, A.S.A., M.A.A.A.
Actuarial Research Corporation

American Enterprise Institute

8 April 2004

Research conducted by Actuarial Research Corporation and funded by the Department of Health and Human Services / Assistant Secretary for Planning and Evaluation

How Many Uninsured

- CPS “never insured” counts much higher than other surveys

Comparison of Ever Medicaid, Never Insured and PIT Uninsured (millions): CY 2001			
	SIPP 01	MEPS 01	CPS 01 (Mar 02)
<u>Counts of Persons</u>			
Never Insured	20.6	31.7	41.2
Point in Time Uninsured	39.1	44.9	N/A
Total Population	272.0	284.2	282.1
<u>Percent Distribution</u>			
Never Insured	7.6%	11.2%	14.6%
Point in Time Uninsured	14.4%	15.8%	N/A
Total Population	100.0%	100.0%	100.0%

Duration of Uninsurance

■ CPS as Full Year

- ❑ Questions asked as “ever insured in last year”
- ❑ Uninsured is therefore all of last year
- ❑ Income and employment are of last year
- ❑ Want insurance status to line up with these concepts

- ❑ Use of CPS as point in time uninsured not at issue here – rather desire to be consistent with the full year data and questionnaire.

How Many with Medicaid?

- Large discrepancy among survey estimates
 - MEPS and SIPP are similar
 - CPS is far lower
- Program Statistics
 - While based on whole population, show CPS to be quite low even when adjusted to comparable basis.

How Many with Medicaid

- CPS for CY 01 is 10 million lower than MEPS, 14.5 million lower than SIPP

Survey Comparison: Ever Medicaid			
	SIPP 01	MEPS 01	CPS Mar 02 (CY 01)
Ever Medicaid			
Counts	42.2 million	37.7 million	27.7 million
% of Population	15.5%	13.3%	9.8%

- CMS data in the range of 47 to 48 million eligibles for FY 01.
 - MSIS has approximately 47 million ever covered in FY 01, while the 2003 CMS statistics note there were 48.1 million eligibles in FY 01, and the current Statistical Supplement has 47 million for FY 01.

Current Population Survey

- Why use the CPS to estimate?
 - Cons
 - Not a health insurance survey
 - Many more full year uninsured
 - vs. other surveys
 - Many fewer ever Medicaid
 - vs. other surveys
 - vs. program data (CMS)
 - Pros
 - Data released in a timely manner
 - Large sample size permits detailed subgroup analysis

Interaction of Medicaid and the Uninsured

- How many should CPS find with Medicaid?
- When we adjust, who do we impute coverage to?
 - Don't want to take all from the uninsured
 - Don't want to take all from persons who have other coverage
- Research on survey non-respondents
 - RAND (CPS specific)

Medicaid Targets

- Adjusting Program Statistics to CPS basis
 - Conversion to calendar years
 - Conversion to non-institutionalized population
 - Exclusion of “partial benefits” populations
 - Moving of SCHIP to its own category
 - Partition by full-year versus part-year

Where is the undercount?

- Comparisons by
 - Age
 - Type of Medicaid
 - Duration of Medicaid
- Adjust based on the demographics of those on the CPS with Medicaid

Adjusting for the Undercount

- Compare to targets within cell
- Using CPS profile based on
 - Insurance
 - Income
 - Work status
 - Family Structure

Results: CY 2003 (March 04 CPS)

Medicaid and the Uninsured: CY 2003 (March 2004 CPS)

	Prior to Adjustment		After Adjusting	
	Medicaid	Uninsured	Medicaid	Uninsured
Children	17.1	11.2	27.3	6.0
Adults	10.7	33.4	16.5	29.7
Aged	3.0	0.3	4.1	0.2
Total	30.8	45.0	48.0	35.9

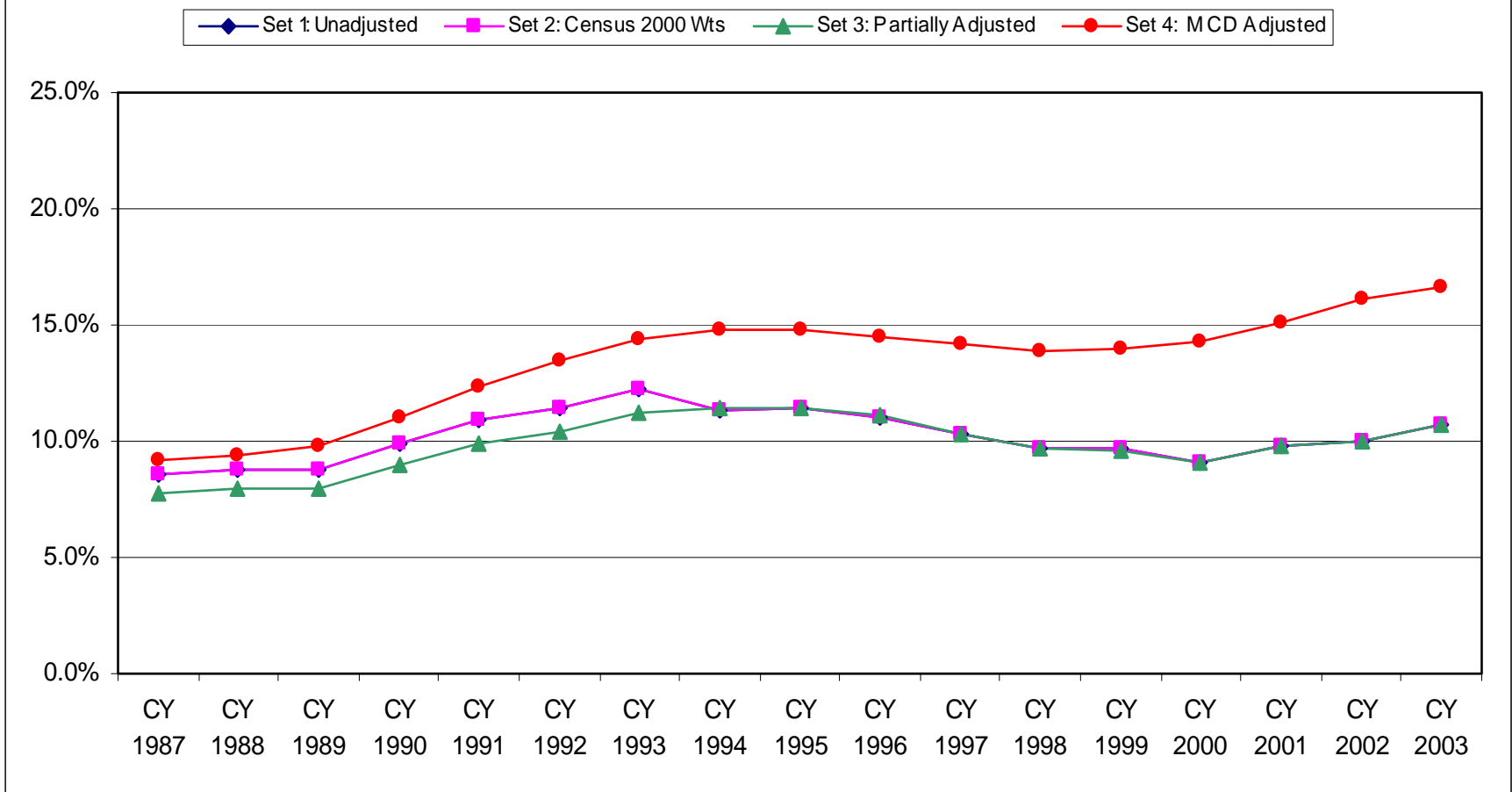
All counts in millions

Results: CY 2003 (March 04 CPS)

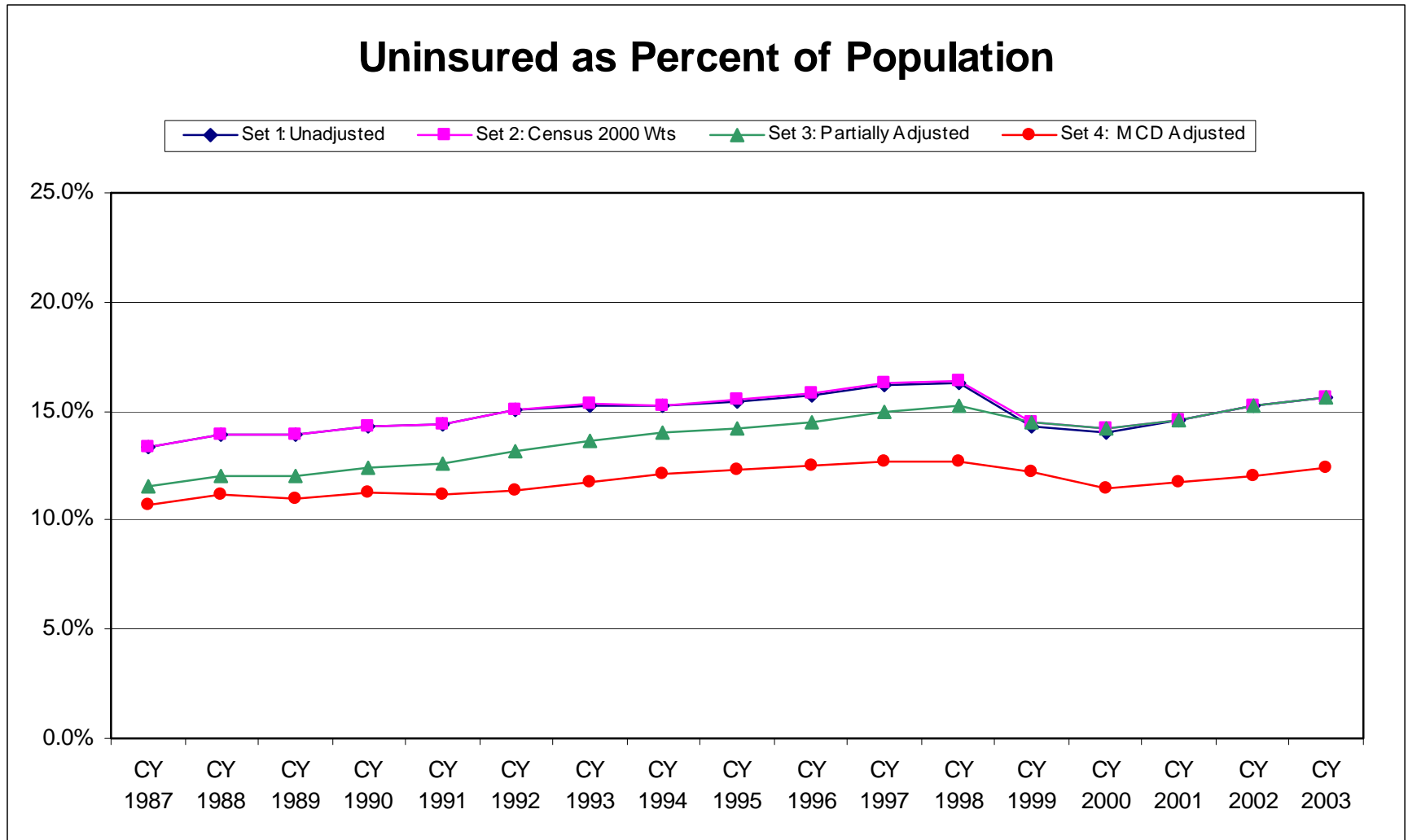
Characteristics of the Uninsured: CY 2003 (March 2004 CPS)				
Characteristic	Prior to Adjusting		After Adjusting	
	Uninsured Rate	% of Uninsured	Uninsured Rate	% of Uninsured
Total	16%	100%	12%	100%
Poverty				
Below 200%	27%	54%	17%	46%
200% and Above	10%	46%	9%	54%
Parental Status				
Parents	17%	24%	13%	26%
Childless Adults	22%	57%	20%	68%
Children	11%	19%	5%	12%
Firm Size				
Under 100	26%	38%	22%	44%
100 and Over	12%	22%	10%	25%

Results Over Time

Medicaid as Percent of Total Population



Results Over Time



Where Do We Go From Here?

- Improvements in Medicaid Targets
- Improvements in Starting Population (CPS)
- Improvements in Methodology