

Today's "Global Food Crisis" in the Mirror Of Long Term Development Trends

Nicholas Eberstadt

Henry Wendt Chair In Political Economy

American Enterprise Institute

eberstadt@aei.org

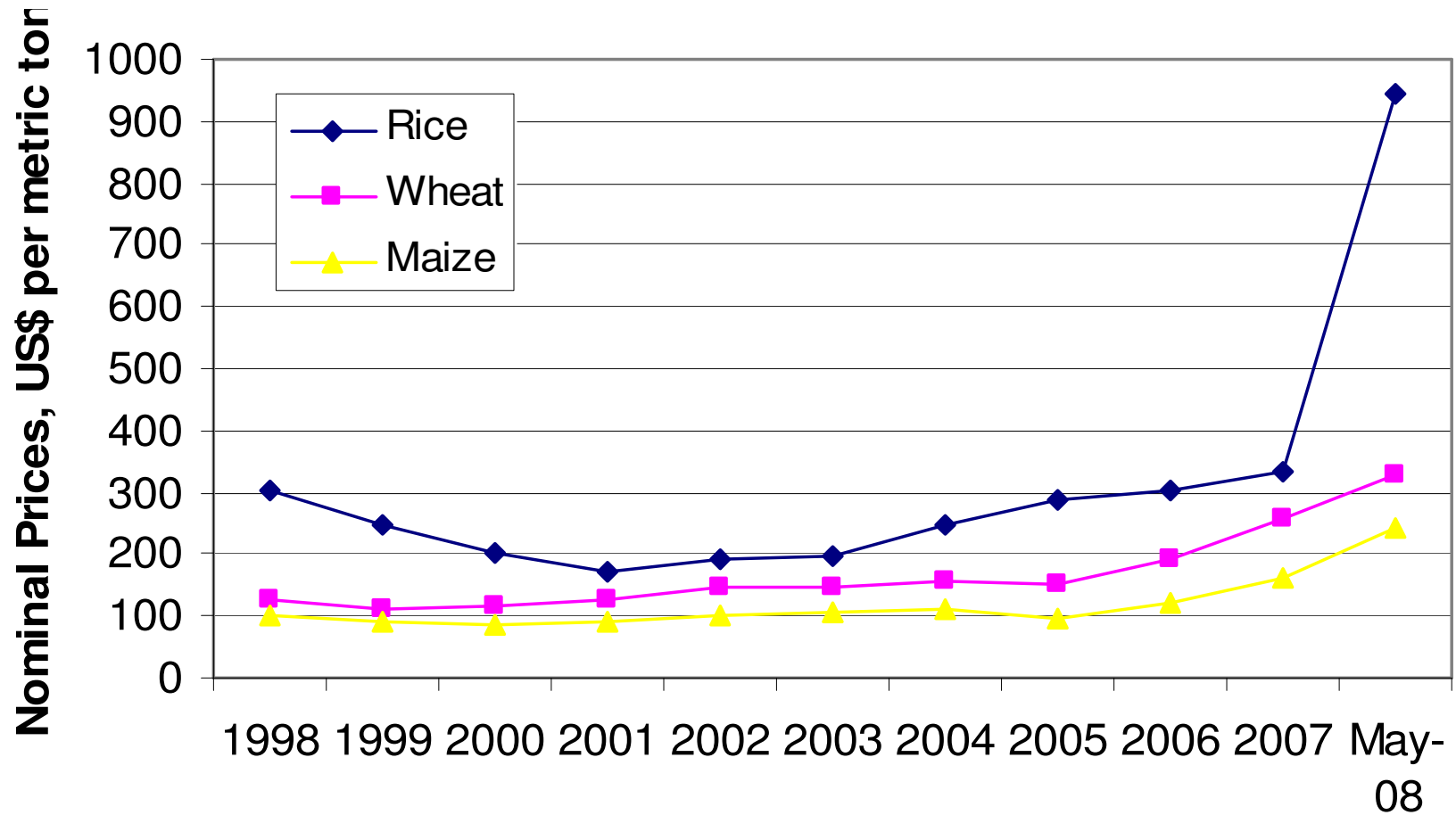
"Was Malthus Right?

Was Today's Global Food Crisis Inevitable?"

AEI Conference

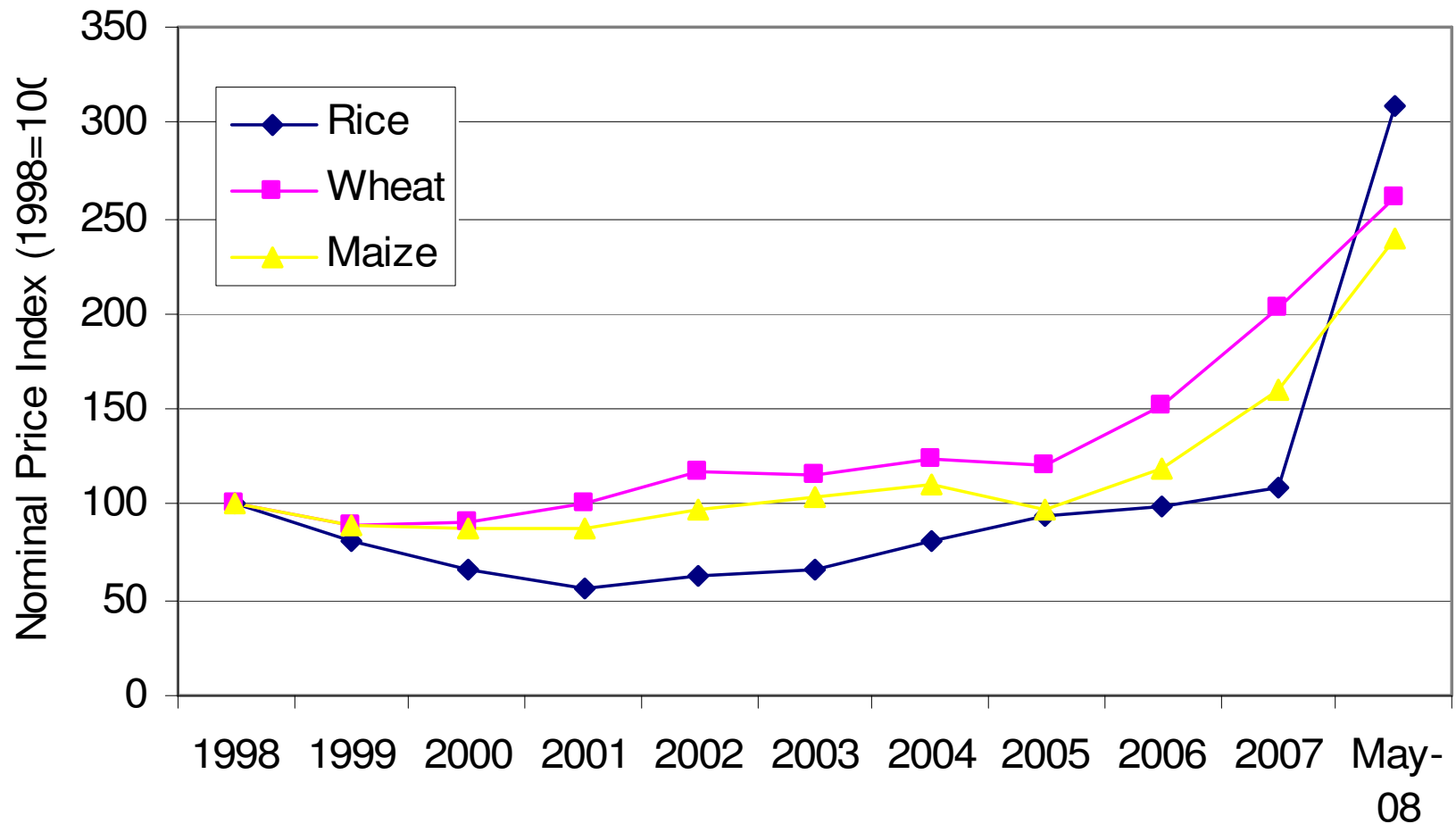
July 2, 2008

International Cereal Price Trends: Nominal Prices, 1998-Q1 2008



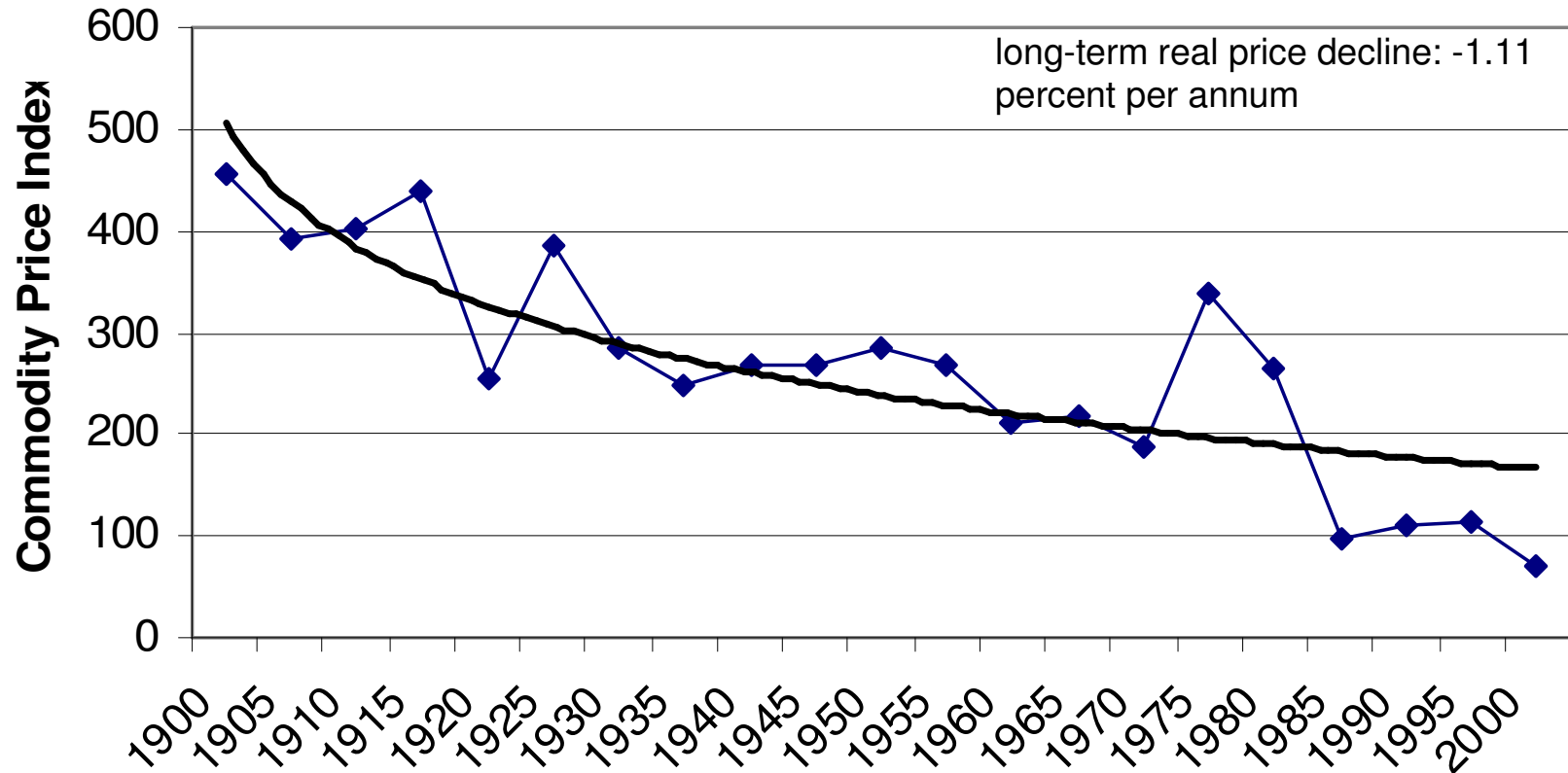
Sources: International Monetary Fund, International Financial Statistics; World Bank Commodity Price Data (Pink Sheet).

Indexed International Cereal Price Trends: Nominal Prices 1998-Q1 2008 (1998=100)



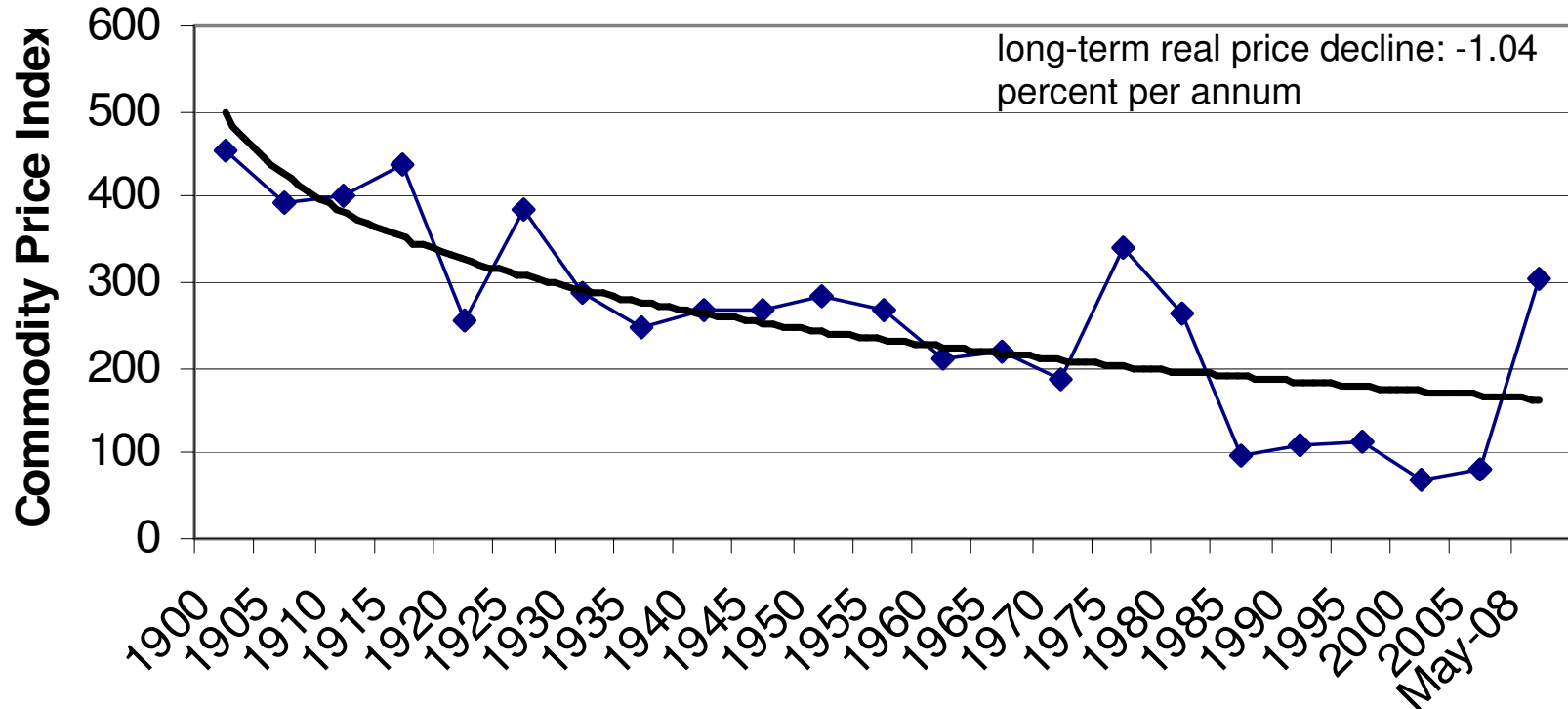
Sources: International Monetary Fund, International Financial Statistics; World Bank Commodity Price Data (Pink Sheet).

Long Term Real International Price Trends: Rice, 1900-2000



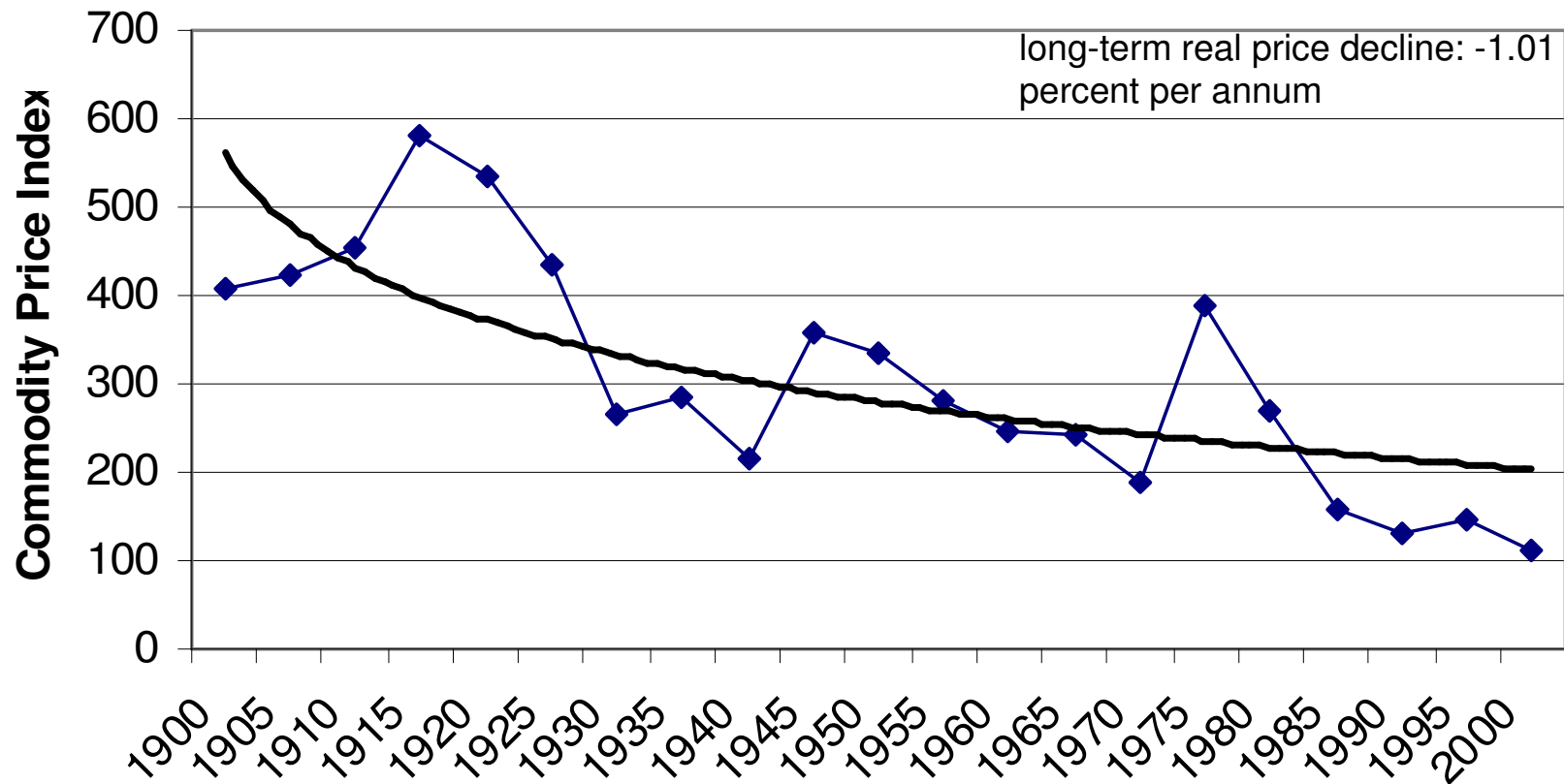
Sources: Commodity Price Indices: 1900-1984 compiled from World Bank data by Enzo R. Grilli and Maw Cheng Yang, World Bank; data for 1985-2003 compiled from World Bank data by Stephan Pfaffenzeller, University of Nottingham; data for 2004-2007 from the International Monetary Fund's International Financial Statistics. (Adjusted for PPI inflation.) The author thanks Stephan Pfaffenzeller for providing this data.
World population: U.S. Bureau of the Census.

Long Term Real International Price Trends: Rice, May 2008



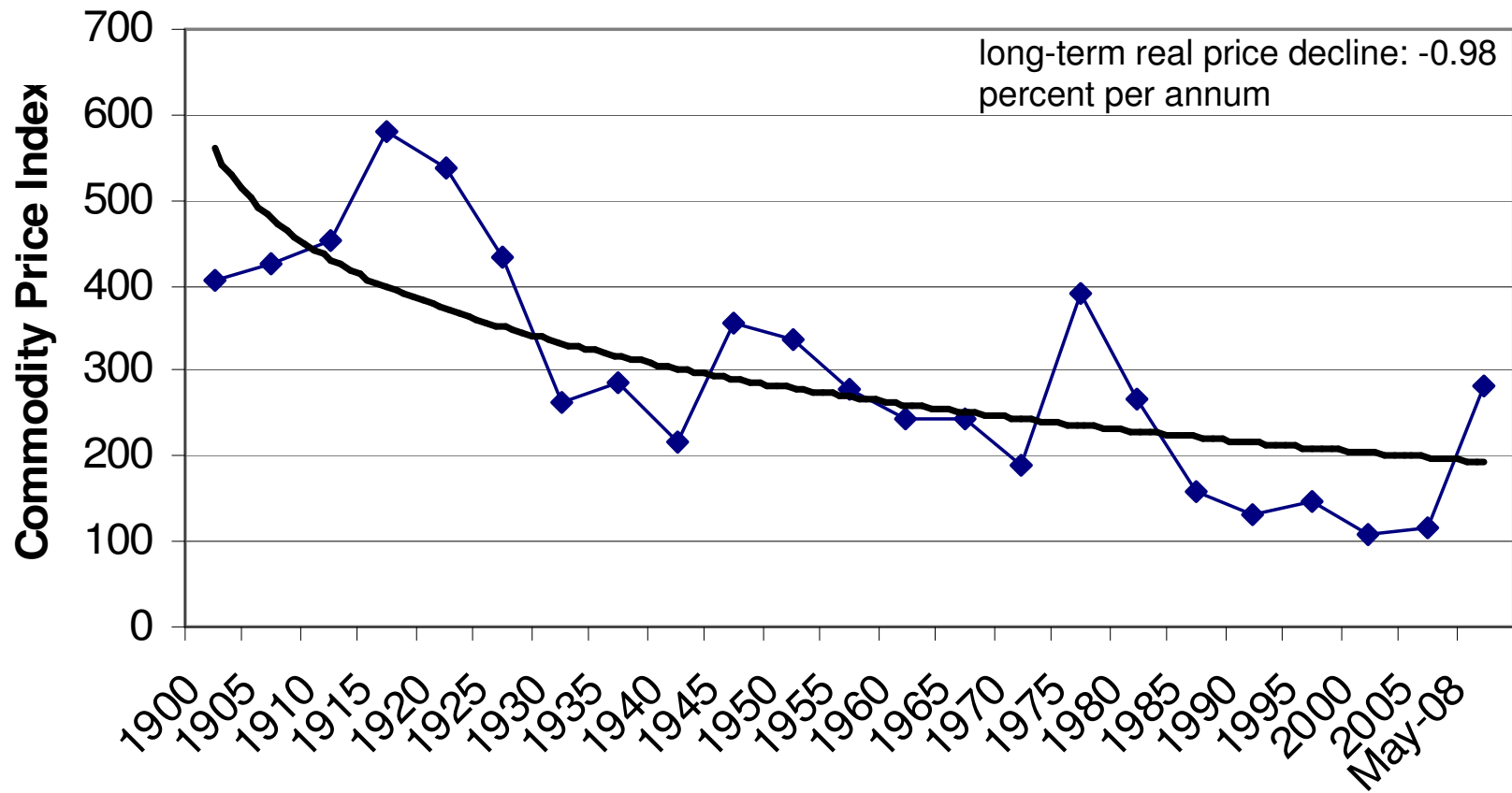
Sources: Commodity Price Indices: 1900-1984 compiled from World Bank data by Enzo R. Grilli and Maw Cheng Yang, World Bank; data for 1985-2003 compiled from World Bank data by Stephan Pfaffenzeller, University of Nottingham; data for 2004-2007 from the International Monetary Fund's International Financial Statistics. (Adjusted for PPI inflation.) The author thanks Stephan Pfaffenzeller for providing this data.
World population: U.S. Bureau of the Census.

Long Term Real International Price Trends: Wheat, 1900-2000



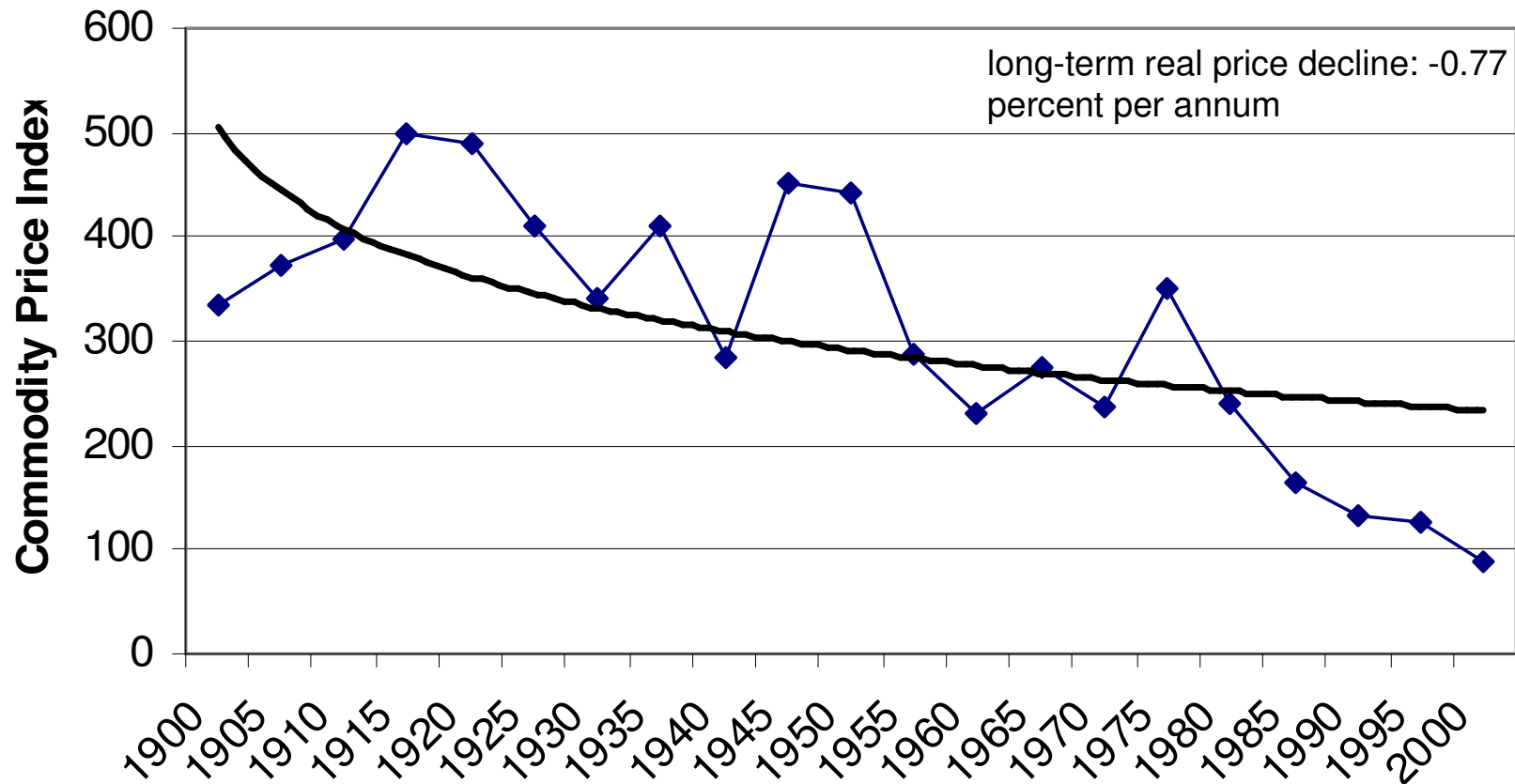
Sources: Commodity Price Indices: 1900-1984 compiled from World Bank data by Enzo R. Grilli and Maw Cheng Yang, World Bank; data for 1985-2003 compiled from World Bank data by Stephan Pfaffenzeller, University of Nottingham; data for 2004-2007 from the International Monetary Fund's International Financial Statistics. (Adjusted for PPI inflation.) The author thanks Stephan Pfaffenzeller for providing this data.
World population: U.S. Bureau of the Census.

Long Term Real International Price Trends: Wheat, 1900-May 2008



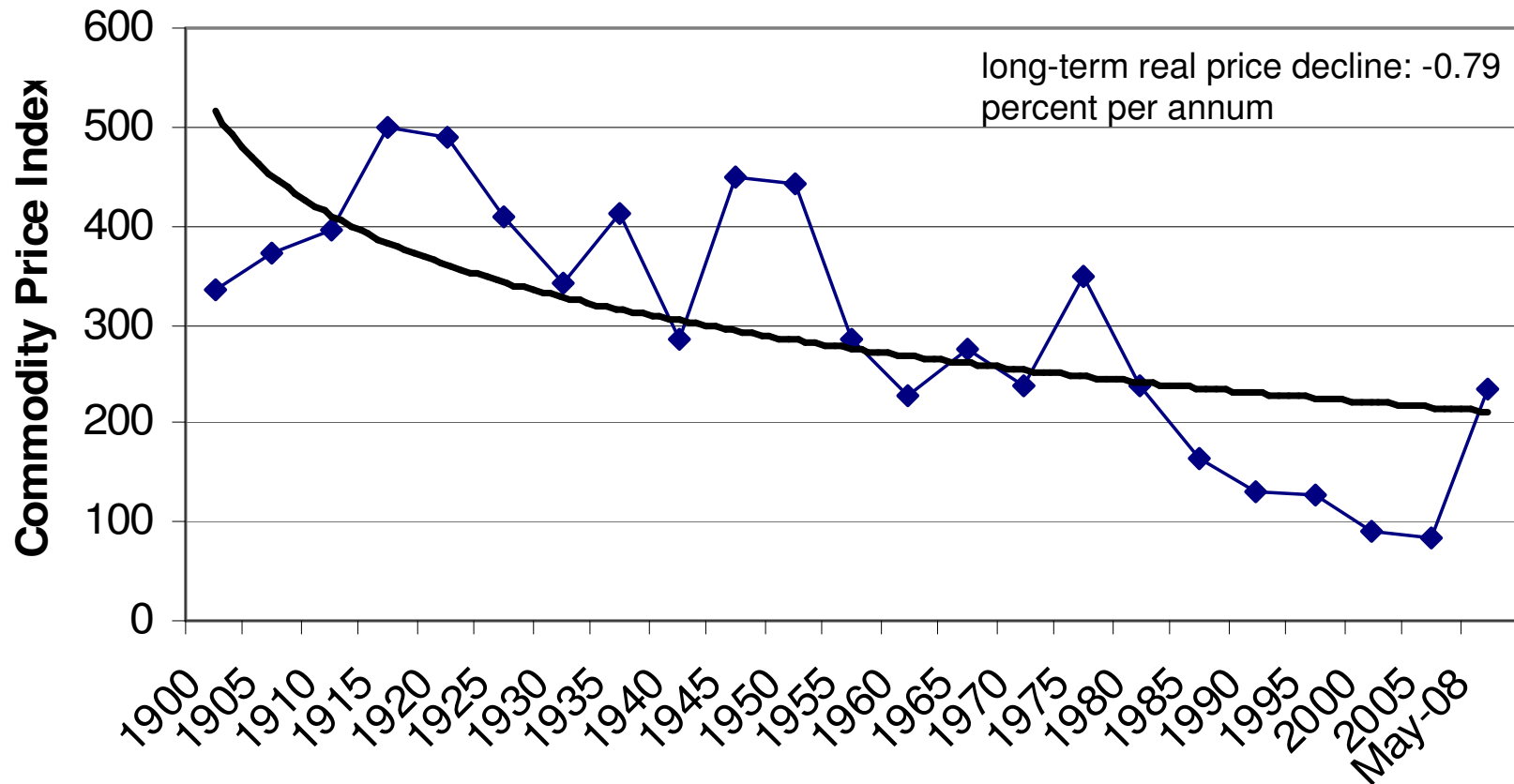
Sources: Commodity Price Indices: 1900-1984 compiled from World Bank data by Enzo R. Grilli and Maw Cheng Yang, World Bank; data for 1985-2003 compiled from World Bank data by Stephan Pfaffenzeller, University of Nottingham; data for 2004-2007 from the International Monetary Fund's International Financial Statistics. (Adjusted for PPI inflation.) The author thanks Stephan Pfaffenzeller for providing this data.
World population: U.S. Bureau of the Census.

Long Term Real International Price Trends: Maize, 1900-2000



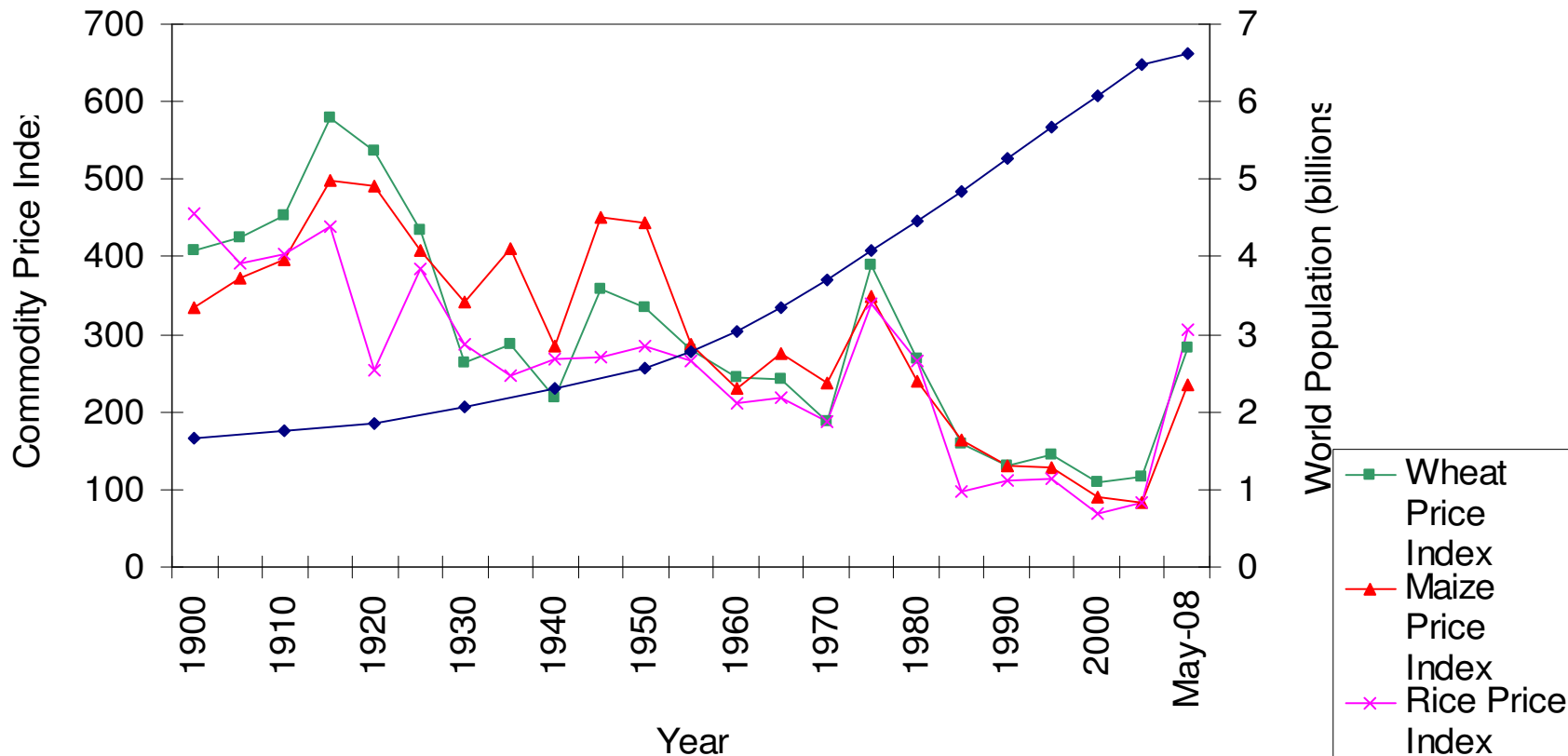
Sources: Commodity Price Indices: 1900-1984 compiled from World Bank data by Enzo R. Grilli and Maw Cheng Yang, World Bank; data for 1985-2003 compiled from World Bank data by Stephan Pfaffenzeller, University of Nottingham; data for 2004-2007 from the International Monetary Fund's International Financial Statistics. (Adjusted for PPI inflation.) The author thanks Stephan Pfaffenzeller for providing this data.
World population: U.S. Bureau of the Census.

Long Term Real International Price Trends: Maize, 1900-May 2008



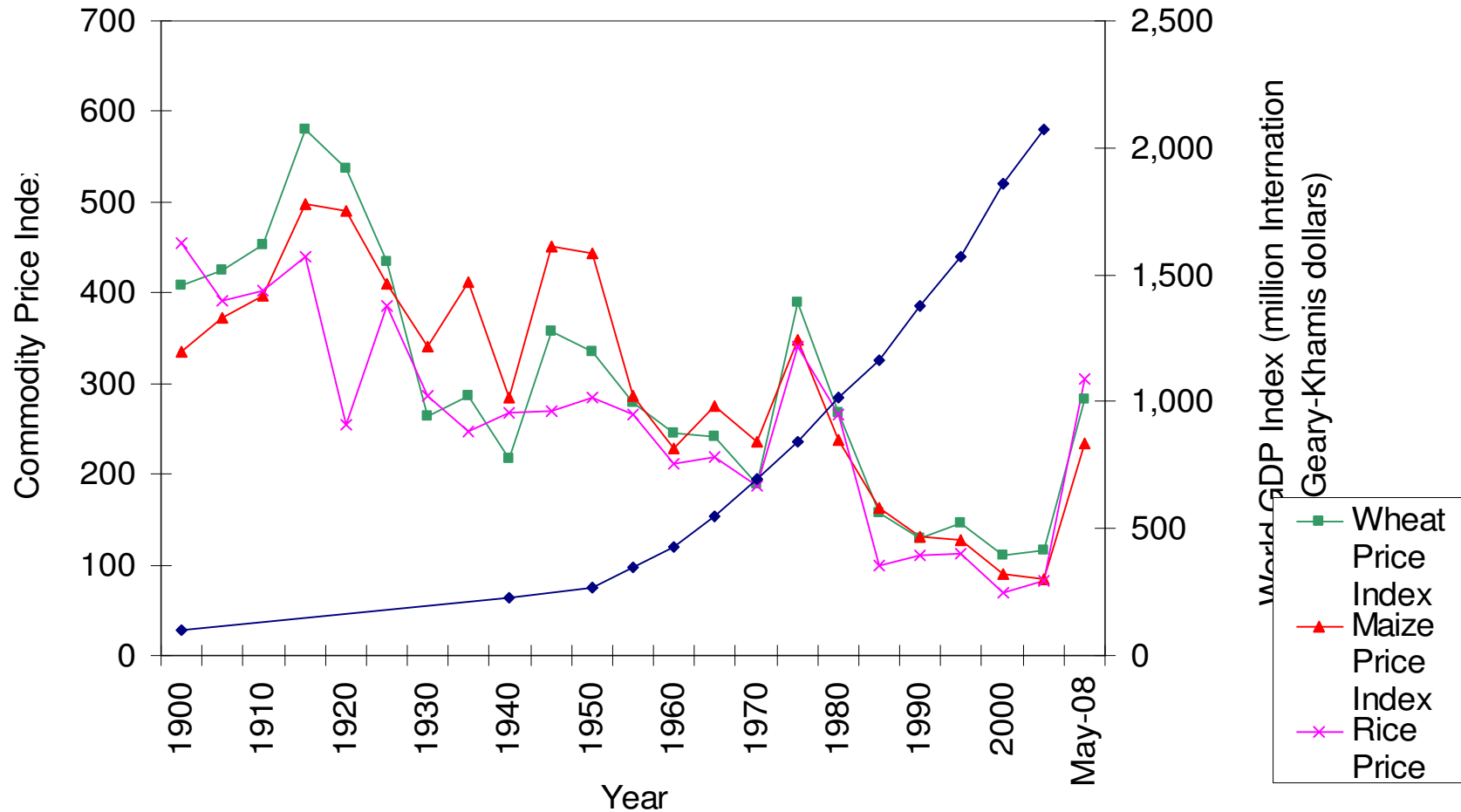
Sources: Commodity Price Indices: 1900-1984 compiled from World Bank data by Enzo R. Grilli and Maw Cheng Yang, World Bank; data for 1985-2003 compiled from World Bank data by Stephan Pfaffenzeller, University of Nottingham; data for 2004-2007 from the International Monetary Fund's International Financial Statistics. (Adjusted for PPI inflation.) The author thanks Stephan Pfaffenzeller for providing this data.
World population: U.S. Bureau of the Census.

World Population vs. Prices of Wheat, Maize, and Rice, 1900-May 2008



Sources: Commodity Price Indices: 1900-1984 compiled from World Bank data by Enzo R. Grilli and Maw Cheng Yang, World Bank; data for 1985-2003 compiled from World Bank data by Stephan Pfaffenzeller, University of Nottingham; data for 2004-2007 from the International Monetary Fund's International Financial Statistics; data for 2008 from World Bank Commodity Price Data (pink sheet). (Adjusted for PPI inflation.) The author thanks Stephan Pfaffenzeller for providing this data. World population: U.S. Bureau of the

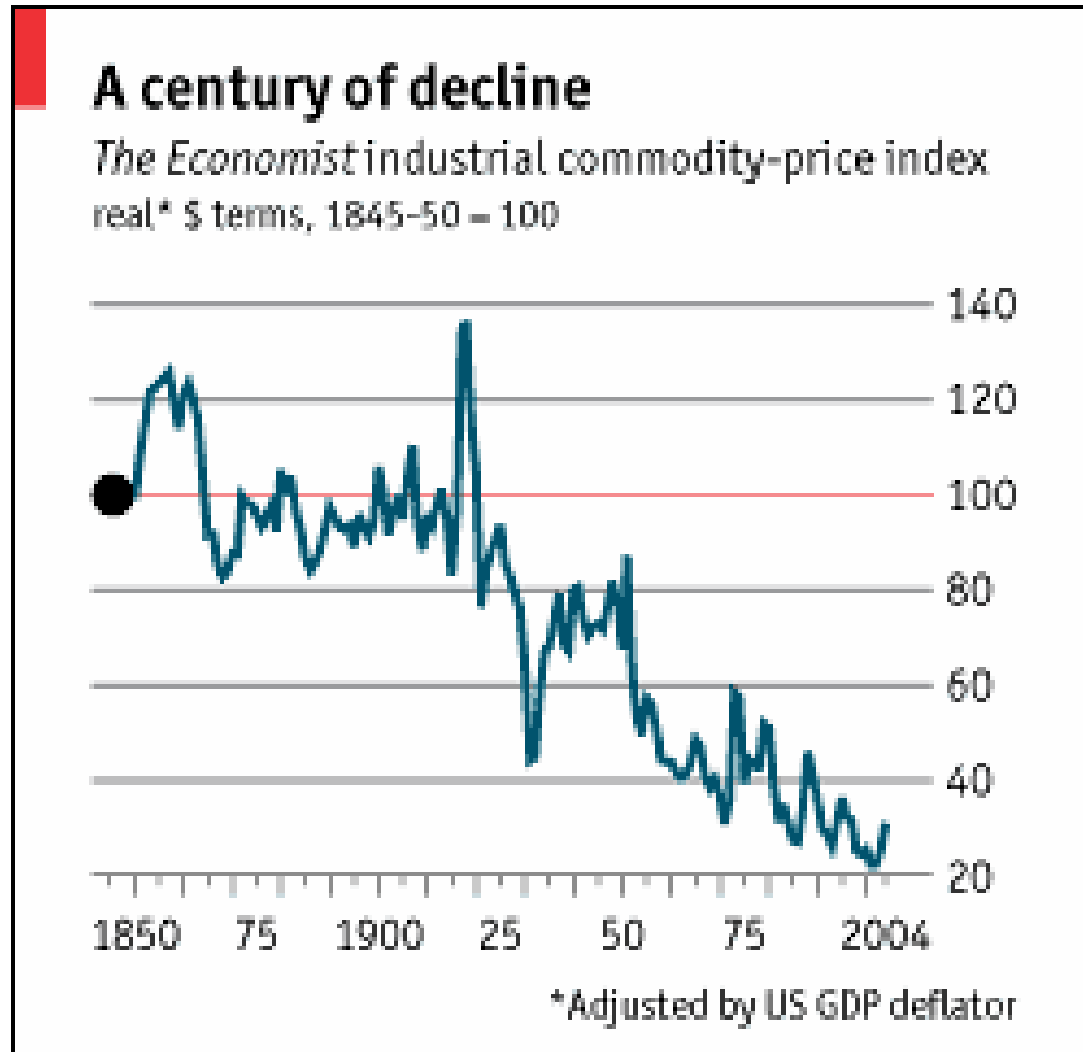
World GDP vs. Prices of Wheat, Maize, and Rice, 1900-May 2008



Source:

Cheng Yang, World Bank; data for 1985-2003 compiled from World Bank data by Stephan Pfaffenzeller, University of Nottingham; data for 2004-2007 from the International Monetary Fund's International Financial Statistics. (Adjusted for PPI inflation.) The author thanks Stephan Pfaffenzeller for providing this data. World GDP: Angus Maddison.

A Broader Measure of Long Term Commodity Price Trends:
The Economist “Industrial Commodity Price Index”



LONG TERM TRENDS IN HUMAN RESOURCES

Estimated Life Expectancy at Birth (Both Sexes): World And Selected Regions, 1950/55 – 2000/05

	1950/1955	2000/2005	Absolute Change (years)	% Change
World	46.4	66.0	19.6	42%
Developed Countries	66.1	75.6	9.5	14%
Developing Countries	40.8	64.1	23.3	57%
Latin America and Caribbean	51.4	72.0	20.6	40%
Asia	41.0	67.5	26.5	65%
Sub Saharan Africa	36.7	48.8	12.1	33%
Memorandum Items:				
Russia	64.5	64.8	0.3	0%

Source: UN World Population Prospects, 2006 Revision

LONG TERM TRENDS IN HUMAN RESOURCES

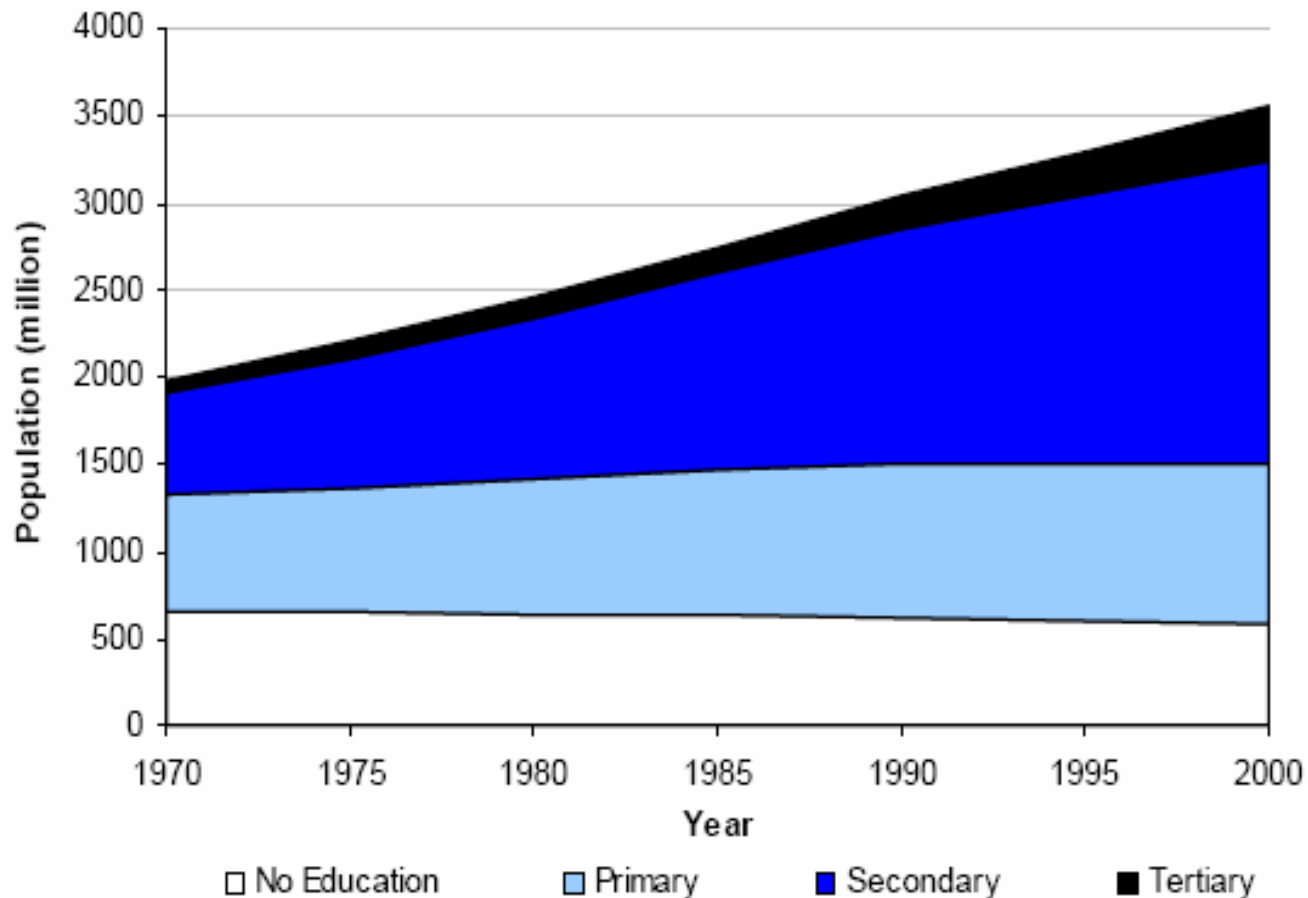
Estimated Educational Attainment by Sex (Population Age 15 and Over): World and Selected Regions, 1960-2000

		Average School Year		Gender Ratio (Female/Male, %)
		Females	Males	
World	1960	4.31	4.98	86.7
	1970	4.74	5.59	84.7
	1980	5.42	6.43	84.3
	1990	5.93	6.94	85.5
	1995	5.94	6.95	85.4
	2000	6.13	7.19	85.3
All Developing	1960	1.46	2.63	55.7
	1970	1.94	3.38	57.2
	1980	2.74	4.37	62.5
	1990	3.61	5.21	69.3
	1995	3.99	5.56	71.8
	2000	4.33	5.92	73.2
Middle East/ North America	1960	0.83	1.63	51.0
	1970	1.39	2.75	50.5
	1980	2.41	4.15	58.0
	1990	3.57	5.17	69.1
	1995	4.21	5.74	73.3
	2000	4.69	6.17	76.0
Sub-Saharan Africa	1960	1.34	2.17	61.8
	1970	1.56	2.60	60.1
	1980	1.91	2.89	66.0
	1990	2.49	3.83	65.0
	1995	2.82	3.98	70.8
	2000	3.01	4.04	74.4
Latin America/ Caribbean	1960	3.24	3.36	96.3
	1970	3.52	4.14	85.0
	1980	4.29	4.57	93.7
	1990	5.24	5.41	96.8
	1995	5.58	5.91	94.4
	2000	5.81	6.31	92.2

Source: Barro, Robert J. and Jong-Wha Lee, International Data on Educational Attainment: Updates and Implications, CID Working Paper No. 42, Harvard University, April 2000.

LONG TERM TRENDS IN HUMAN RESOURCES

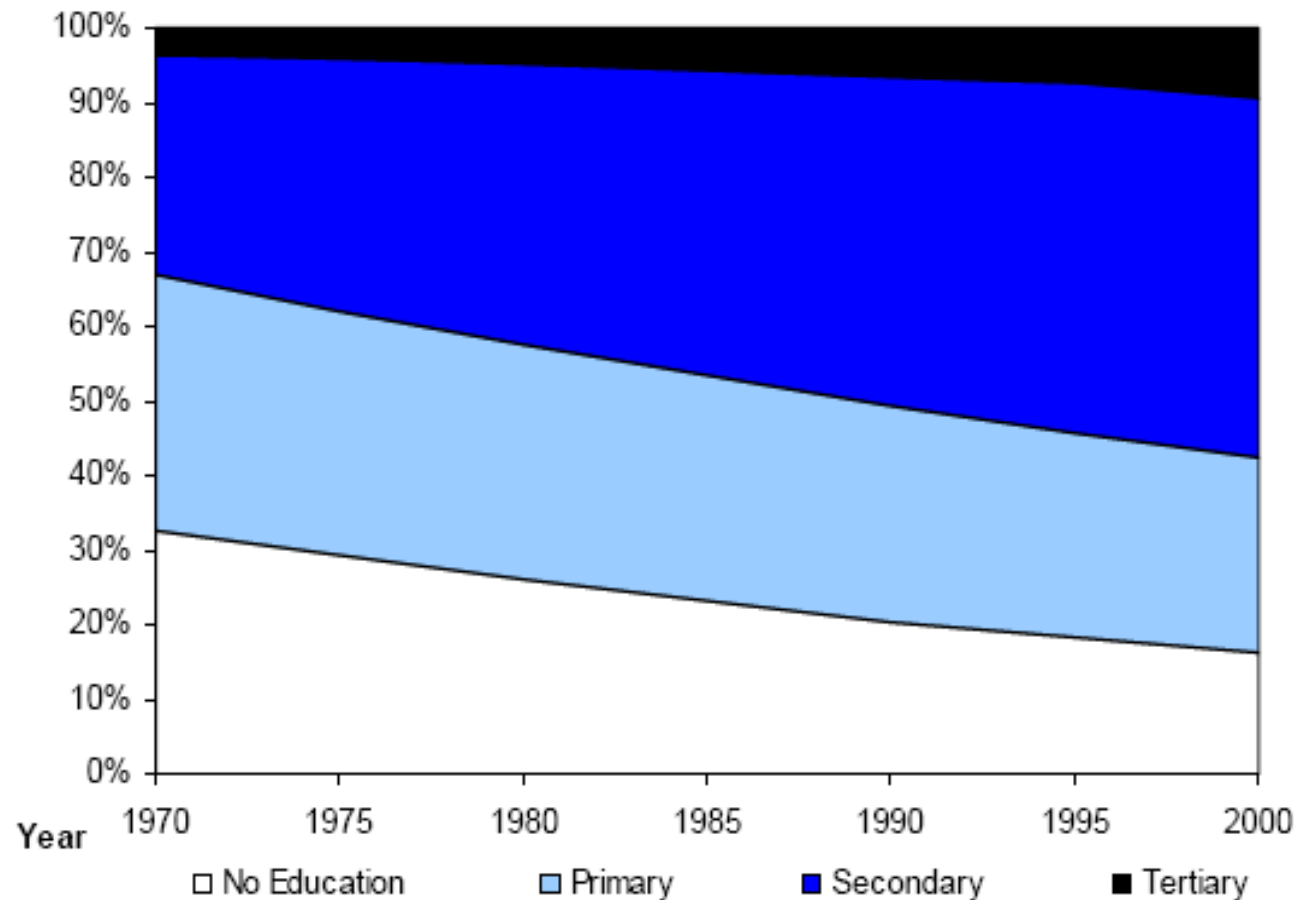
Estimated Population Distribution by Education: World Population Aged 15-64, 1970-2000 (120 countries/economies)



Source: W Lutz, A Goujon, S K.C., W Sanderson. 2007. Reconstruction of population by age, sex and level of educational attainment of 120 countries for 1970-2000. Vienna Yearbook of Population Research, vol. 2007, pp 193-235.

LONG TERM TRENDS IN HUMAN RESOURCES

Proportional Distribution of Education: World Population Aged 15-64, 1970-2000 (120 countries/economies)



Source: W Lutz, A Goujon, S K.C., W Sanderson. 2007. Reconstruction of population by age, sex and level of educational attainment of 120 countries for 1970-2000. Vienna Yearbook of Population Research, vol. 2007, pp 193-235.